

A photograph of a large concrete drainage structure with multiple gates. The structure is labeled "STEELE BAYOU DRAINAGE STRUCTURE" at the top. The gates are partially open, and water is flowing through them. The background shows a line of trees under a clear sky.

STEELE BAYOU DRAINAGE STRUCTURE

FALLACIES

**Environmental Group Claims - “Propaganda”
versus
“Cold Hard Facts” - The Truth**

Vicksburg District Mitigation Efforts

October 26, 2006

PROPAGANDA:
The Corps and local people can't be trusted
... they are already behind on Mitigation.



TRUTH: Wrong again!
We are ahead of schedule!

Project	Acreage Planned for Acquisition	Acreage Acquired a/	Percent Mitigation Acquired to Date	Percent Project Completed	Percent Concurrent with Construction
Upper Steele Bayou	5,250	5,569	103%	94%	110%
Upper Yazoo Project	17,000	10,919	64%	65%	99%
Yalobusha & Tallahatchie River Channel Maintenance	1,380	1,380	100%	100%	100%
Big Sunflower River Channel Maintenance	1,912	287 b/	15%	1%	1,510%
Yazoo Backwater Levee	8,400	8,773 c/	104%	100%	104%
Delta Headwaters Project Abiaca/Coldwater	1,290	811	63%	62%	101%
MS River Levees	5,200	2,140	41%	42%	98%

a/ To date, the Vicksburg District has purchased 102,550 acres of mitigation lands, which is 32,165 acres above the required minimum.

b/ Project is on hold pending completion of new Supplemental EIS. Only one item was constructed with 38 acres of mitigation owed.

c/ A re-analysis of the compensatory requirements for the YBW Levees will be included in the Yazoo Backwater Project Final Report

Wetland Analysis/Impact

PROPAGANDA:

“The pump will destroy over 200,000 acres of wetlands ...”

Earth Justice

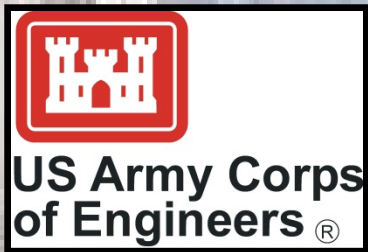
TRUTH:

With the Recommended Plan in place, there will be a 19.2% increase in Wetland Functional Capacity Units!

For the past several years, the Corps and EPA have been working together on Wetlands using and developing state-of-the-art technology.



EPA & Corps Wetland Verification



Functional Capacity Units: EPA and Corps of Engineers scientific model to measure wetland functions and impacts

President Bush Wetlands Policy: “No net loss will no longer suffice, net gain must be the standard in wetlands conservation.”

Reforestation Easements

PROPAGANDA:

The Corps will never be able to get the reforestation easements in the 1-year flood event.

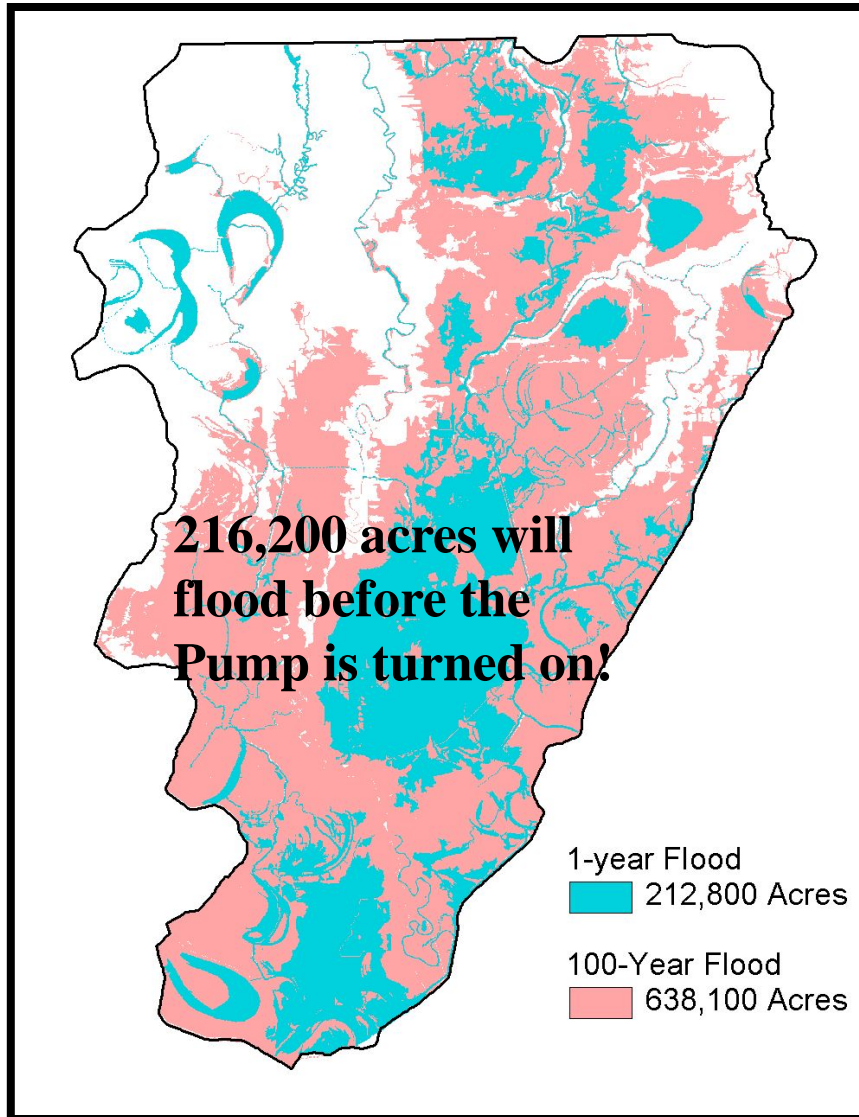


TRUTH: Farmers have converted 270,000 acres of ag land into trees by CRP or WRP in the last 20 years in the Delta.

- 1. Farmer in the 1-year flood event will get no benefits from the pump - his land will be susceptible to flooding every year.**
- 2. CRP & WRP are reaching their caps in the South Delta.**
- 3. Reforestation easement is less restrictive than WRP.**
- 4. Corps will plant trees and ensure 70% survival - no cost to owner.**
- 5. Landowner maintains ownership of land. He can harvest trees, sell hunting rights, etc.**
- 6. Landowner can sell other rights on this land – carbon, etc.**
- 7. Offer for reforestation easement will remain open for 10 years after completion of pumps – this will allow new farm bills to be passed & the farmer will see the pumps will not benefit his land.**

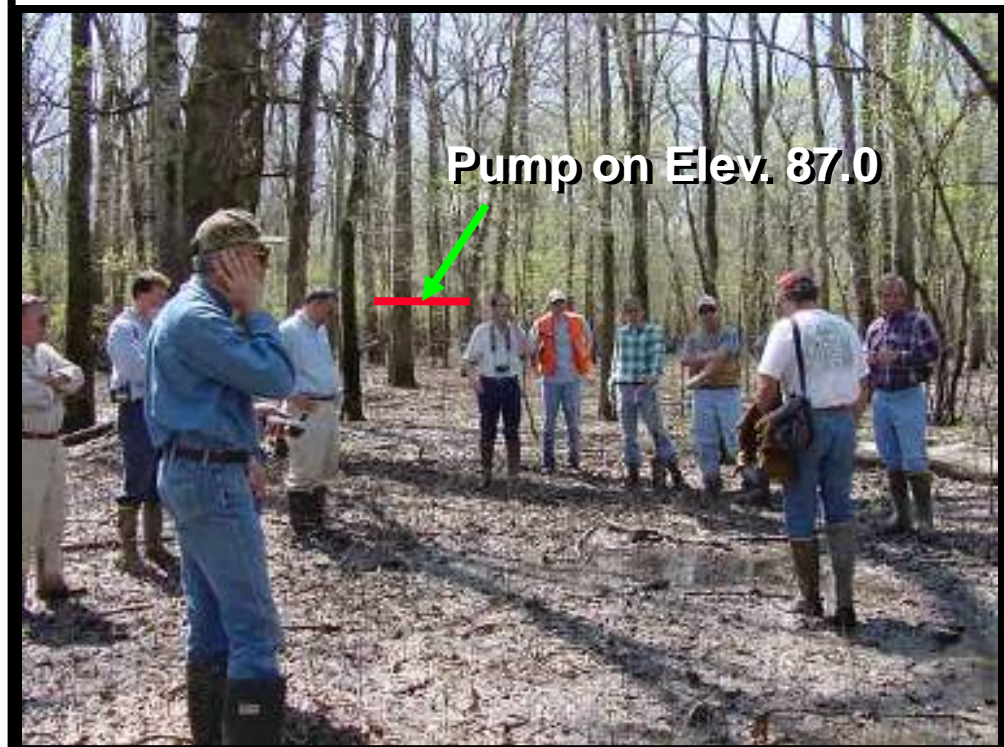
PROPAGANDA:

If the pump is built, they will pump the place dry.



TRUTH:

1. Over 200,000 acres will be flooded before the pump is turned on!
2. The Gates can pass 48,000 cfs by gravity versus pumping only 14,000 cfs!
3. The Gates will close to maintain water in the Delta during low-water conditions!



Wetland Acres Potentially Changed to Non-jurisdictional Status



Total	26,300
Cleared	8,300
Forest	18,000

PROPAGANDA:
 “Farmers will clear 26,300 acres of woods if the pump is put in place”

Private	Public
7,100	10,900

Reforested	1,000
Forested	6,100

Conservation	2,400
Non-Conservation	3,700

TRUTH:
 There are only 3,700 acres that will lose jurisdictional status and will be eligible for clearing.

PROPAGANDA:

“Farmers will clear the woods & destroy more wetlands if the pump is put in place”



Board of Mississippi Levee Commissioners
James E. Wanamaker, Chief Engineer
P.O. Box 637
Greenville, MS 38702-0637

NRCS
Natural Resources Conservation Service
Suite 1321, Federal Building
100 West Capitol Street
Jackson, MS 39208



TRUTH:

Farmers lose eligibility in Farm programs on all land on all farms, if they clear woods.

Also, farmer will have to apply for 404 Permit from Corps of Engineers.

Board of Mississippi Levee Commissioners
James E. Wanamaker, Chief Engineer
P. O. Box 637
Greenville, MS 38702-0637

This is in response to your letter regarding the provisions of the Farm Bill would apply to a third party such as the US Army Corps of Engineers.

In the Code of Federal Regulations, a wetland is defined as a water resource district, drain within the jurisdiction of the district converted due to the actions of the district or permitted the drainage.

Clearly, a third party exemption does not apply to community-wide drainage projects. It is limited to actions of predecessors in interest and individuals, not drainage districts, Corps, NRCS

“Accordingly, where a person’s wetland is converted due to the actions of the district entity, the person shall be considered to have caused or permitted the drainage ...”

dredged, filled, leveled, or otherwise manipulated (including the removal of woody vegetation or any activity that results in impairing or reducing the flow and circulation of water) for the purpose of or to have the effect of making possible the production of an agricultural commodity ... To

“The actual ‘trigger’ in the case of forested sites is the removal of woody vegetation, not the drainage for swamp buster provisions”

... To the extent possible will be in violation of the case of forested sites is the

Since 1985: Source: USDA
Ag Land converted to Trees
105,028 acres in WRP
167,109 acres in CRP
272,137 total acres
Trees converted to Ag Land
1,105 acres

If you need any additional information, please advise.

Al Garner
Al Garner
Assistant State Conservationist

cc: Homer L. Wilkes, Sta
James Johnson, Area

Al Garner

Al Garner
Assistant State Conservationist

The Natural Resources Conservation Service

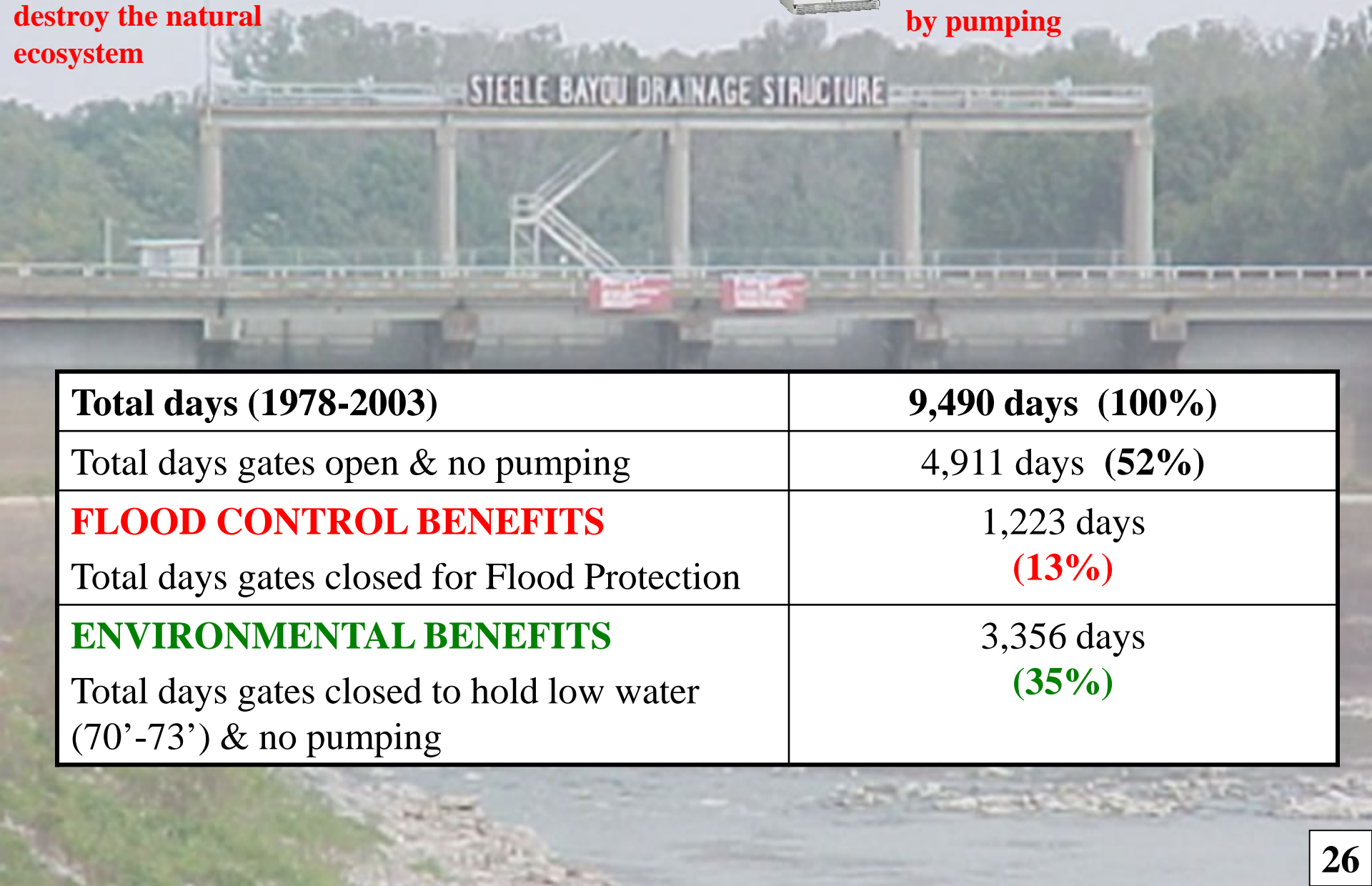
An Equal Opportunity Provider and Employer

Propaganda:
Pumps have no benefit to the environment & they destroy the natural ecosystem

1978-2003 (26 years)
If we had the pumps



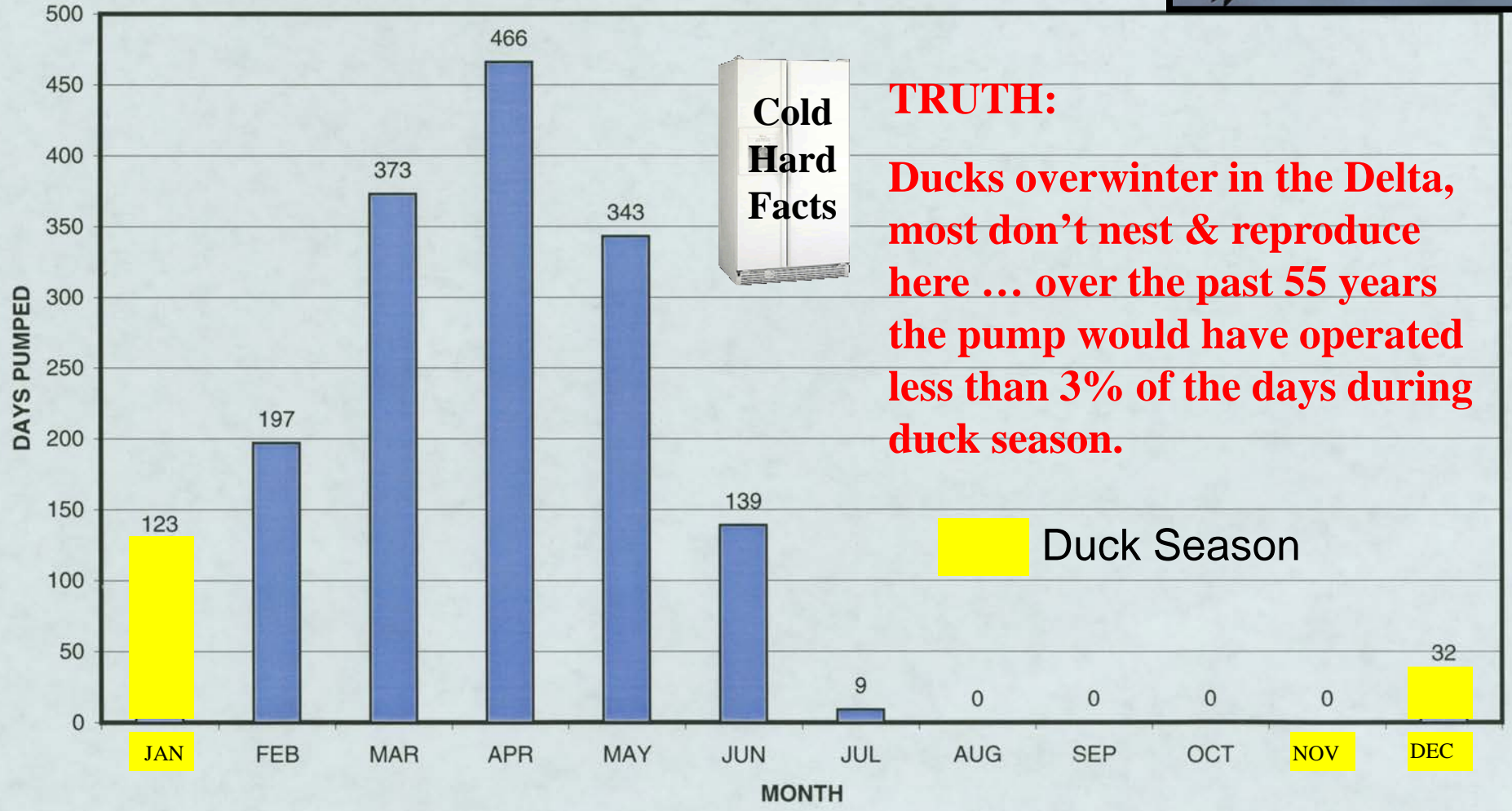
The project will be used to hold water almost 3 times as many days as it will be used to evacuate water by pumping



Total days (1978-2003)	9,490 days (100%)
Total days gates open & no pumping	4,911 days (52%)
FLOOD CONTROL BENEFITS	1,223 days (13%)
Total days gates closed for Flood Protection	
ENVIRONMENTAL BENEFITS	3,356 days (35%)
Total days gates closed to hold low water (70'-73') & no pumping	

PROPAGANDA:
“The pump will
kill duck season
in the South
Delta”

**YAZOO BACKWATER RECOMMENDED PLAN
TOTAL NUMBER OF DAYS PUMPED BY MONTH
1943-1997 (55 YEARS) = 20,075 DAYS
155 days (0.7%)
(1% OF TOTAL DAYS)**

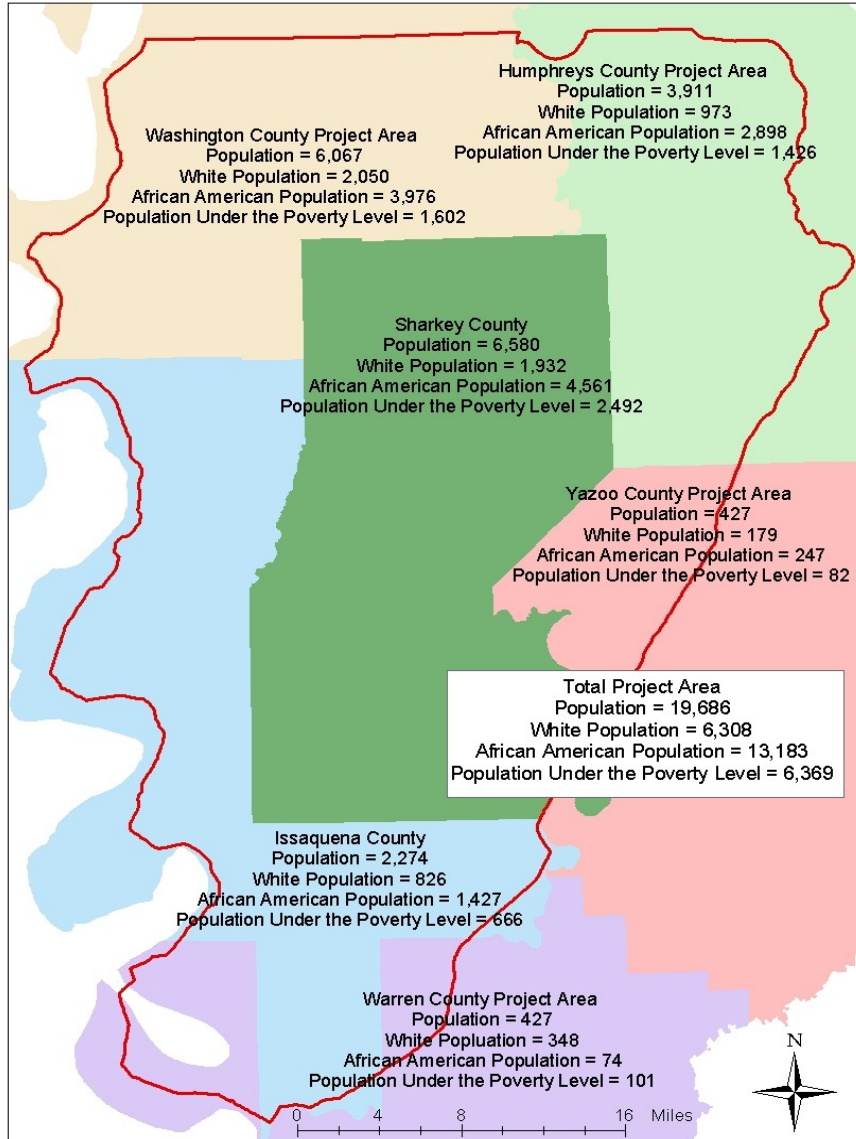


TRUTH:
Ducks overwinter in the Delta,
most don't nest & reproduce
here ... over the past 55 years
the pump would have operated
less than 3% of the days during
duck season.

PROPAGANDA:

The project will only help the rich white owners!

Population in the Yazoo Backwater Area



Source: U.S. Census Bureau American FactFinder - Census 2000

	United States	Mississippi	South Delta*
Poverty % (2003)	12.5	18.3	27.3
Per Capita Income (2003)	\$31,472	\$22,550	\$19,767
Unemployment Rate (2004)	5.5	6.2	8.5
% High School Graduate	80.4	72.9	60.9
% Bachelor's Degree or Higher	24.4	16.9	11.9
% House units without vehicles	10.3	9.2	16.7
% House units lacking complete plumbing facilities	0.6	0.9	2.7

TRUTH:

68% of the population in the region is minority and 32% live below the poverty line.



YAZOO BACKWATER PROJECT ENDANGERED SPECIES – CONSULTATION



US Army Corps
of Engineers®



LOUISIANA BLACK BEAR

Fish and Wildlife Service August 2006

Concurred with the “not likely to adversely affect determination. Effects by this project on the bear are expected to be insignificant and/or discountable; and even possibly beneficial.”



USFS Pondberry Research

PONDBERRY

Fish and Wildlife Service March 2007

“The proposed project is not likely to jeopardize the continued existence of pondberry.”



PROPAGANDA:
The YBW Project
will destroy habitat for
the threatened
LA Black Bear and
endangered Pondberry.

TRUTH:
With the reforestation of
55,600 acres of existing
agriculture land into trees
and the reduced flooding
by the pumps –
Habitat for the bear and
Pondberry will
be increased!

Lower Mississippi River Valley - Selected Federally-Funded Pumping Plant

100 Cubic Feet Per Second or Greatest (cfs)

(22 federally-funded pumps within a 200 mile radius of the Backwater Area)

PROPAGANDA:
This is the largest pump
in the world.



TRUTH: According to official records, the proposed Yazoo pumps is next to the smallest in pumping capacity vs. drainage basin size.

Pumping Plants	Drainage Area (sq. miles)	Capacity (Flow cfs)	Pump Capacity CFS Vs. Watershed	Year Completed	Location
Walker Lake Pumping Plant	6.8	675	99.2	1949	Greenwood, MS
Yazoo City Pumping Plant	9.5	540	57	1954	Yazoo City, MS
East Jackson Pumping Plant	15.7	600	38.2	1967	Jackson, MS
Chauvin Bayou/River Styx	36.4	750	21	1994	Monroe, LA
Lake Chicot Pumping Plant	350	6500	19	1987	Lake Chicot, AR
Calion Local Protection	18.1	200	11	1959	El Dorado, AR
New Madrid Pumping Station	207.2	1500	7.2	Under Const.	New Madrid, MO
Fool River Pumping Plant	44	300	7.0	2001	Jonesville, LA
Graham Burke Pumping Plant	227	1500	7.0	1964	Dewitt, AR
Haha Bayou Pumping Plant	112.6	750	7.0	2001	Jonesville, LA
McKinney Bayou	37	250	7.0	1962	Tunica, MS
Tensas-Cocodrie Pumping Plant	582	4000	7.0	1986	Jonesville, LA
W.G. Huxtable Pumping Plant	2013	12200	6.1	1977	Marianna, AR
Yazoo Backwater Pump	4093	14000	3.4	Proposed	Warren County
Pelucia Creek Pumping Plant	24	75	3.1	1993	Greenwood, MS

YAZOO BACKWATER PROJECT

VS.

BIG SUNFLOWER RIVER MAINTENANCE PROJECT

PROPAGANDA:

**“These two projects are really the same.
You need both of them to work.”**

YAZOO BACKWATER PROJECT

The Yazoo Backwater (YBW) is a backwater project – protecting the Delta from MS River Floodwater. Project was authorized in 1941 following the removal of the Eudora Floodway from the MR&T Project.

BIG SUNFLOWER RIVER MAINTENANCE PROJECT

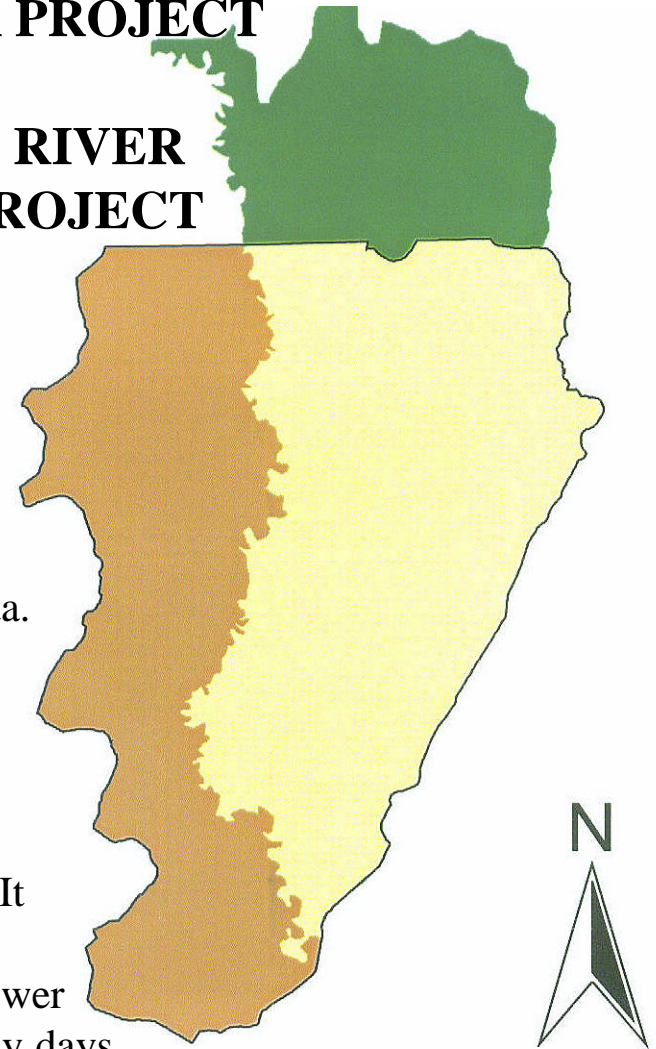
The Sunflower Project is a headwater project – rainfall within the Delta. The Sunflower Project is a maintenance project restoring the channel capacity of the Big Sunflower River & Tributaries Project as completed in the mid-60’s.

“You must have the Big Sunflower Project to justify the Pumps.”

The Yazoo Backwater will work even without the Sunflower Project - It does not need the Big Sunflower Project because it will be pumping the same amount of water regardless if the Sunflower Project is in place. The YBW will remove floods over many days.

“You must have the Pumps to justify the Big Sunflower Project.”

The Sunflower Project will evacuate water much faster than the pumps can work. Floodwater will get to the Pump site a few hours earlier w/ project in place. The Sunflower Project will work even without the Pumps. Areas in Washington County will still get 2-3’ stage reductions even if the pumps aren’t built.



Legend

-  Joint Area
-  Backwater
-  Big Sunflower

PROPAGANDA:
Pumps won't help
prevent flooding of homes.

YBW PROJECT RESIDENTIAL STRUCTURES

TRUTH: The pumps
will remove 91% of Homes
from the 100-year flood event.

COUNTY	RESIDENTIAL STRUCTURES <u>CURRENTLY</u> IN THE 100 YEAR FLOOD	RESIDENTIAL STRUCTURES <u>REMOVED</u> FROM THE 100 YEAR FLOOD W/ PROJECT	RESIDENTIAL STRUCTURES <u>REMAINING</u> IN THE 100 YEAR FLOOD WITH PROJECT
WASHINGTON	128	89	39
ISSAQUENA	192	176	16
SHARKEY	370	349	21
WARREN	248	240	8
HUMPHREYS (MSLB)	171	149	22
HUMPHREYS (YMDLB)	35	34	1
YAZOO (YMDLB)	79	78	1
	1223	1115	108



PROPAGANDA:

1. Pumps will not eliminate Flooding of homes.
2. Project costs too much.

TRUTH:

1. Pumps will actually remove a higher percentage of residences from the 100 year flood than other projects.
2. Cost is comparable to other projects.

MISSISSIPPI DELTA FLOOD CONTROL PROJECTS

PROJECT	COSTS (Millions)	Percentage of Structures removed from the 100 year flood
Upper Yazoo Project	\$366M	40%
Steele Bayou Project	\$112M	75%
Yazoo Backwater Project	\$220M (1.42 B/C Ratio)	91%



The Problem With Flooding...

Environmentalists say ring levees will protect us???



Power Outages



Inadequate Transportation



These are incomplete solutions...we say reduced flooding is the solution!

Access to Healthcare

Backflow of Raw Sewage

We need the Pump!!



Yazoo Backwater Tours

